

communequator

FOURTH EDITION



The newspaper for the equator hot and cold plumbing system



HOUSING: *when will supply catch up with demand?*

In July 2002, house prices in the UK recorded their biggest ever monthly rise, continuing a relentless upward trend which has seen a year-on-year increase in the cost of a property of around 20%.

The massive demand for homes has been due to a number of factors. More people are living alone, either through circumstances or choice. Also, the divorce rate is very much higher. This means that whereas one home was needed by a family

unit, now there is often a requirement for two.

But while the demand for new homes goes on increasing, just 162,000 new homes were built

in 2000-01. This figure is lower than in any year since 1927, except the war years. For the first time since records began, the number of houses in Britain is lower than the number of households requiring a place to live.

One report from the highly respected Joseph Rowntree Foundation says that more than four million homes will

have to be built in Britain over the next 20 years – equivalent to a town the size of Reading every year – if Britain is to tackle the problem.

The crisis is most severe in the South East and the shortage of affordable housing in London now means that many key workers in both the public and the private sectors can no longer afford to live and work in the capital. The government has promised to tackle the situation: the grant to the Housing Corporation to help build

new homes for low-paid workers this year is £1.2bn – and there are increasing calls for ministers to allocate even more money to help build affordable housing in areas of high demand to retain key workers in vital industries and services. It's clear that the need for new houses is not going to recede in the foreseeable future, which means that the demand for quality building materials will also remain buoyant. We are confident that we can meet that demand.

First Class accolade for equator

Equator hot & cold plumbing, soil and underground systems have been specified for new student accommodation at Oxford Brookes University. The 106 flats in five blocks are located on the campus and when complete will use 40,000m of Equator pipe and conduit. All the bathrooms are constructed in pre-assembled 'pods' for quick and easy connection.

Contractors Briggs and Forrester are installing the Equator PE-X pipe and fittings for all the hot and cold water services and central heating via radiators. Their site foreman, Tony Allingham comments "We are very pleased with Equator, this is the first job we've used

it on – it's light and easy to use. I particularly like how easy it is to uncoil the coils of pipe."

Unique Fittings

Briggs and Forrester have also taken advantage of some of the unique fittings in the Equator range to make the radiator installations quick and tidy. Radiators were connected to the heating circuit via Terminal end boxes, which provides a quick first fix connection via copper or plastic pipe. Briggs and Forrester have had special



Terminal End Box

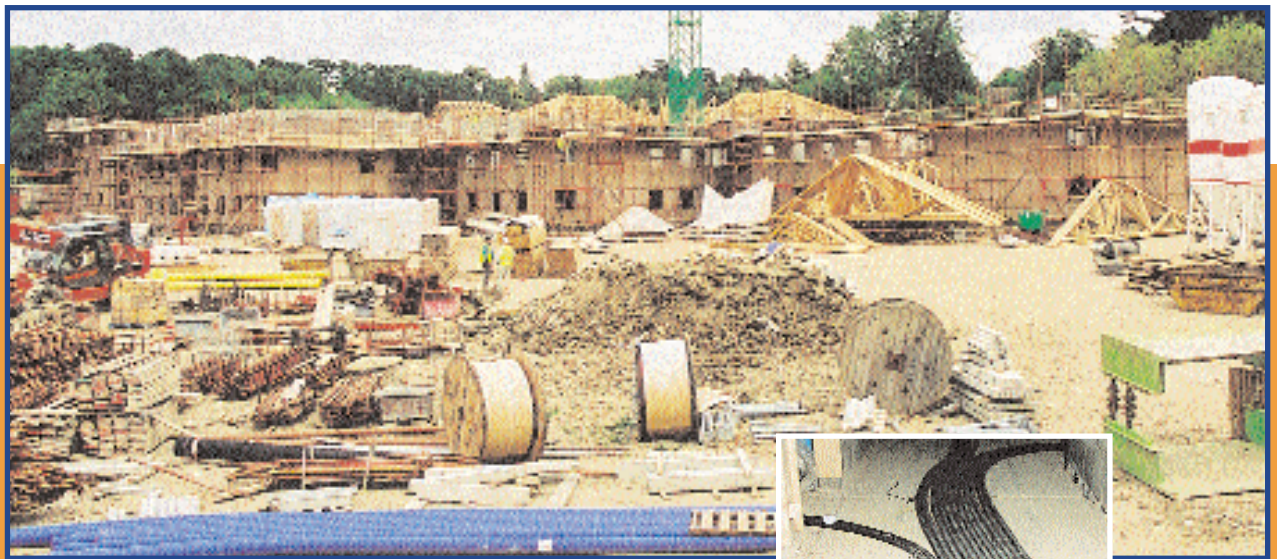
metal brackets fabricated to ensure that when hung, all radiators are level without the need for adjusting each radiator individually.

Pipe in Pipe

Equator pipe was run through lengths of conduit throughout the installation. This allows lengths of pipe to be easily installed prior to second fix and subsequently withdrawn if necessary. Fittings are only located at each end of the pipe run, making installation quicker and easier.

Manifold Plumbing

All the radiators are fed using Equator manifolds which provides an efficient,



Equator pipe run through conduit

central distribution point in the six self-contained bed sits and communal kitchen on each floor.

The main contractor was Leadbitter and the architects, Gotch, Saunders and Surridge.



The site of Southampton Football Club's old ground, The Dell, situated near the city centre is being transformed by Barratt Homes. The 4½ acre site which once echoed with the roar (or groans!) of the crowd, now is the site for a mixed development of apartments and town houses. The rumour is that No 7 Le Tissier Drive has been snapped up fast!

one location. This ensures that individual pipe runs can be isolated for extension or maintenance. The manifolds are situated within inspection boxes. The Equator conduit system also allows easy pipe withdrawal should any remedial work be undertaken- as Equator PE-X pipe is extremely flexible.

equator *Scores at the Dell*

Contractor K A Watts Plumbing and Heating have worked with Barratts on a number of other developments in the city and are installing the hot and cold water services and central heating systems to all units.

The hot water is coming from an unusual source, a 1 mile deep geothermal well under the city. The water rises naturally in the well to within 100 metres of the surface. It is then pumped to the heat station. The temperature of the water at source is 76°C. The hot brine is then passed through a heat exchanger, which transfers the heat to clean water. Each property on The Dell site is using special boilers sourced from Denmark to run the central heating systems using the geothermally heated water.

Equator, is being used for the hot and cold water supply and central heating on the site. Central manifolds are used to connect to each appliance or radiator in a property. The principle of the Manifold is simple - to provide a central point for all plumbed in facilities and radiators - either by floor or in

The development consists of 166 two bedroom apartments, 18 town houses and 44 affordable homes. A schematic of each pipe run was produced for each type of property by the Marley Technical services department; site visits are also available by an Equator technician if any queries arise.

Kevin Watts, proprietor of K A Watts commented "We've used a lot of Equator on many other projects in the past. We believe it's the best system on the market, mainly due to the wide range of fittings & manifolds."



The Dell as it was



BARRATT
Britain's Premier House Builder

VOTED MAJOR
HOUSEBUILDER OF THE YEAR
THE BUILDING AWARDS



Equator pipe in conduit connected to valved manifolds

Top Tips!



Equator valved manifolds have labelled valve heads that enable the plumber to clearly identify particular runs of pipe. Each valve head can be identified as either hot or cold by simply turning the disc over to suit.



Equator manifolds can be neatly hidden in their own manifold access box. This can easily be tucked away within the airing cupboard or in a suitable void, i.e. within the bathroom. Manifolds can be assembled in a number of configurations to suit the installation by simply joining them together.



When connecting copper pipe to Equator fittings, ensure that a copper pipe insert is used. This will safely guide the cut copper pipe end past the o-ring, eliminating any risk of damaging the o-ring from sharp edges on the copper pipe.

Enough de-mounting tools sold to fill a family car

Artisan, craftsman, technician - knowledge allows progress



By Brian Whorlow IEng FIOP RP,
Business Training Manager,
Marley Plumbing and Drainage

The ancient plumber was indeed an artisan who used only simple hand tools, he carried his livelihood in his bare hands, few building products were available 'off the shelf', so he crafted them mainly using lead. A newly trained apprentice of yesteryear was usually required to travel the country for several years to acquire varied knowledge from other master craftsmen, and to broaden his experience of the work; hence the term 'journeyman plumber'. Today's modern plumber has a longer journey; a true professional should embrace CPD (continued professional development). That means topping-up and seeking new knowledge throughout an entire career. One way of attaining CPD is to participate in distance learning courses, which allow self-study.

When Marley launched Equator, the first all PE-X push-fit hot and cold water system, almost three years ago, it was decided to fully support professional plumbers by providing a distance learning course. Although product handling experience is useful, we don't pretend that any special practical skill is needed, because push-fit is the simplest jointing method known. Therefore the course is designed to impart product awareness, which will enable installers, designers, and specialist merchant advisers to correctly identify installation opportunities, and benefits. The Equator distance learning booklet is freely available, and the assessment fee is just £4.50. Assessment is undertaken by submitting a multiple choice style question paper to Mid Kent College, which ensures third party recognition, and a certificate is subsequently issued on achieving a satisfactory level of attainment.

If we could reincarnate a Victorian plumber, and show him some copper joints being soldered on site, he would probably remark that: "It's not proper plumbing, as I used to do". Yet the technicalities of the installation would frighten him. The professional plumber of today is more of a technician than a craftsman, he must understand new regulations, standards, boiler controls, and typically has to cope with gas assessment as well. Modern products like Equator, simplify installation, allowing the plumber to focus his attention on the more important technical aspects of the job.

If you would like to participate in the Equator distance learning course, simply telephone our literature hotline on 01622 852585.

Local CPD presentations to professional groups are also freely available, using large screen video technology, presentations have already been given to many branches of the Institute of Plumbing throughout the UK.



A NEW SOLUTION FOR AN OLD HOUSE

Renovating a derelict house is bound to be demanding, but when it is the family home and you are living in a caravan on site, things can be more than a little stressful.

What's required are products and services that are simple to install, work effectively and are guaranteed to last. Step forward the Equator underfloor heating system.



Kay & Howard Wiseman have been renovating their early Victorian home from scratch for 10 months and are on the verge of vacating their caravan and moving back in. They are using the Equator underfloor heating system in their kitchen, installed by Aaron Services of Ipswich.



The Equator underfloor heating system has been designed specifically for a single room, such as a conservatory, kitchen, bathroom or living

room. It is unique in that it can be fed from a traditional central heating system, eliminating the need for costly additional circulation pumps, motorized valves or complicated wiring.

The Danfoss control valve acts in the same way as a radiator TRV, which means that there is only one control needed in the room, a truly unique underfloor heating solution.

Richard Pond at Aaron Services comments: "Underfloor Heating used to be something that we called in a specialised firm for, but since the latest systems have been launched, they are so easy to lay that we have no problem undertaking the work ourselves and we would definitely use Equator underfloor heating from Marley Plumbing & Drainage again."

The new design and installation guide for single zone Equator underfloor heating is now available. The guide details all the design considerations and gives clear step by step installation advice. Contact 01622 852607 for your copy or download a copy from www.equator.co.uk.

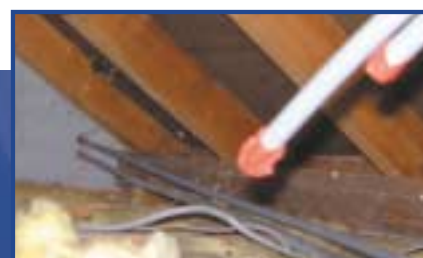


When pushing plastic or copper pipe into an Equator fitting, be sure to mark the insertion depth on the pipe with a suitable marker pen. This is easily done by offering the pipe up to the fitting, there is a line marked on all plastic bodied fittings. Simply mark the pipe once the pipe end meets with line.



Equator pipe can be handled more easily if the packaging is left on the coil of pipe. Simply cut the packaging, using the cutter provided on the packaging, on the inside diameter of the coil. Grab the end of the pipe and pull out from the centre of the coil.

Leaving the pipe in the packaging will ensure that the pipe is kept clean and scratch free, not to mention in one manageable bundle!



To identify whether the pipe runs are hot or cold, simply mark the pipe end with either red or blue tape.



When pushing pipe through block walls or partitioning that has jagged edges, wrap the pipe end with some protective tape. This will reduce the risk of the pipe end becoming scratched / damaged.

Enough pipe inserts installed to reach up 14 Mount Everests



equator receives BSI Kitemark

After many months of testing, Equator has received a kitemark licence under BS 7291: Parts 1 and 3: 2001 – Class S from the British Standards Institute. This incorporates pipe and fittings in all sizes. Copies of this licence and its accompanying schedule are available from the download centre on the Marley Equator website.

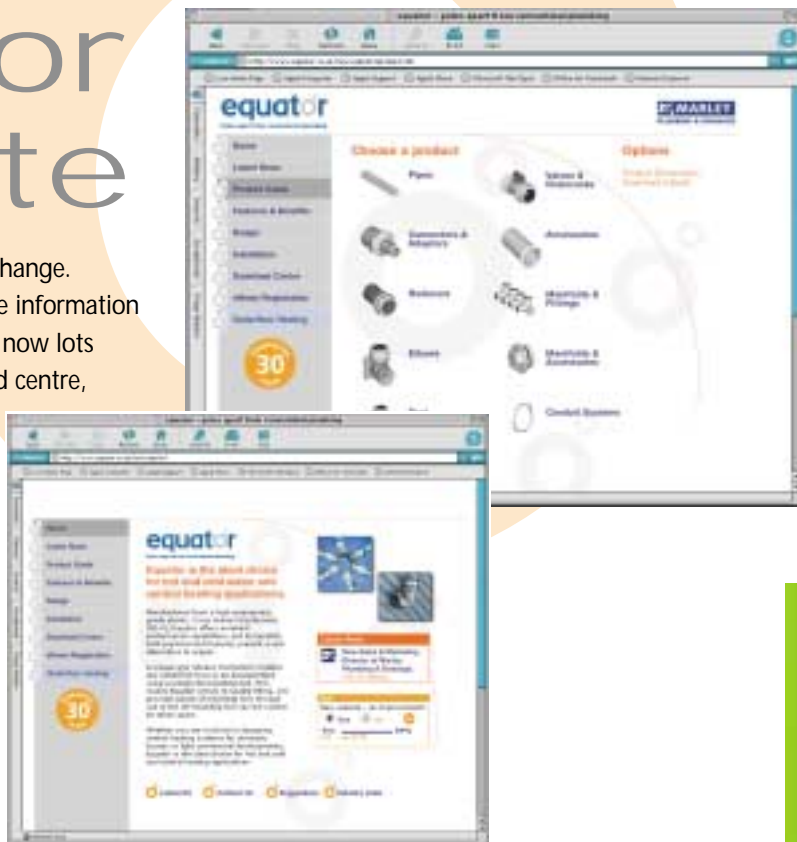
Also available from the download centre, BBA certificate no 00/3763 which again relates to all sizes of Equator pipe and fittings. Equator has WRC (Water Research Approval Council) and with a 30 year guarantee – you can't go wrong when you specify Equator!



New look Equator website

Now three years old - it was time for a change. The new look Equator website has all the information held on the old site, albeit updated, but now lots more besides, including a new download centre, where you can easily download Equator literature and certificates. You can also find all the information about our new single zone Equator underfloor heating system and check out the latest news...

www.equator.co.uk



Equator is 'Highly Commended'



The Adjudication Panel for the British Plastics Federation sponsored 'Horners award for Plastics' has awarded Equator their 'Highly Commended' award.

The Horners Award is an annual award for an imaginative or innovative contribution to the plastics industry.

The Worshipful Company of Horners was founded to set and maintain standards in the ancient craft of the Horner. After it had 'adopted' plastics, the company introduced an award to encourage good design in plastics, these materials being the logical successor to the horn. The rules of entry were revised in 1976 to require a proven record of recent commercial success, and processes as well as products became eligible.

Any outstanding product, machine or process could win the prestigious Horners Award. Entries are judged from the viewpoint of their significance in the United Kingdom through the imagination and appropriate use of plastics. The Rt.Hon. The Lord Mayor of London is Patron of the Award and presents it to the winners at the Horners' Annual Banquet at The Mansion House, in central London.



Head Office & Export Division
Lenham, Maidstone
Kent ME17 2DE
England
Telephone 01622 858888
Literature hotline 01622 852585
Fax 01622 858725
Fax order hotline 01622 851111
www.equator.co.uk
www.marley.co.uk
marketing@marleyext.com

Further information

For technical advice please call
01622 852695

For general enquiries and details of
your nearest stockist please call the
Customer Services Department
01622 852585 (England & Wales)
01698 815231 (Scotland & Cumbria)

exhibition news



Equator was headline news in Hall 3, the domestic heating and plumbing show at Interbuild in June. Product demonstrations proved particularly popular with visitors, as did the competition, where two competitors had to connect from a beer barrel to 3 beer glasses using Equator pipe & fittings. The winner at the end of the week was Jason Guiver from Penzance who completed the task in 1 minute and 47 seconds. His prize was a hand held TV and a £400 'Red Letter day' voucher, which he says his wife is deciding how to spend!



Next in line is PHEX, London on 12th & 13th November, held at the Chelsea football ground. PHEX concentrates solely on plumbing and heating products, with all the major manufacturers attending. If you pre-register for a ticket, there's a free pint of beer and a buffet lunch on offer. Call Sam on 01622 852737 for your ticket request form.

Visit us on the stand and enter our prize draw and you could be the winner of one of 2 Casio portable hand held TV's!